

Courtney Johnson

Portfolio 2017

extro

e

r

t

creative

curious

inventive  
explorative

### Technique

Revit, Hand Rendering & Photoshop

### Overview

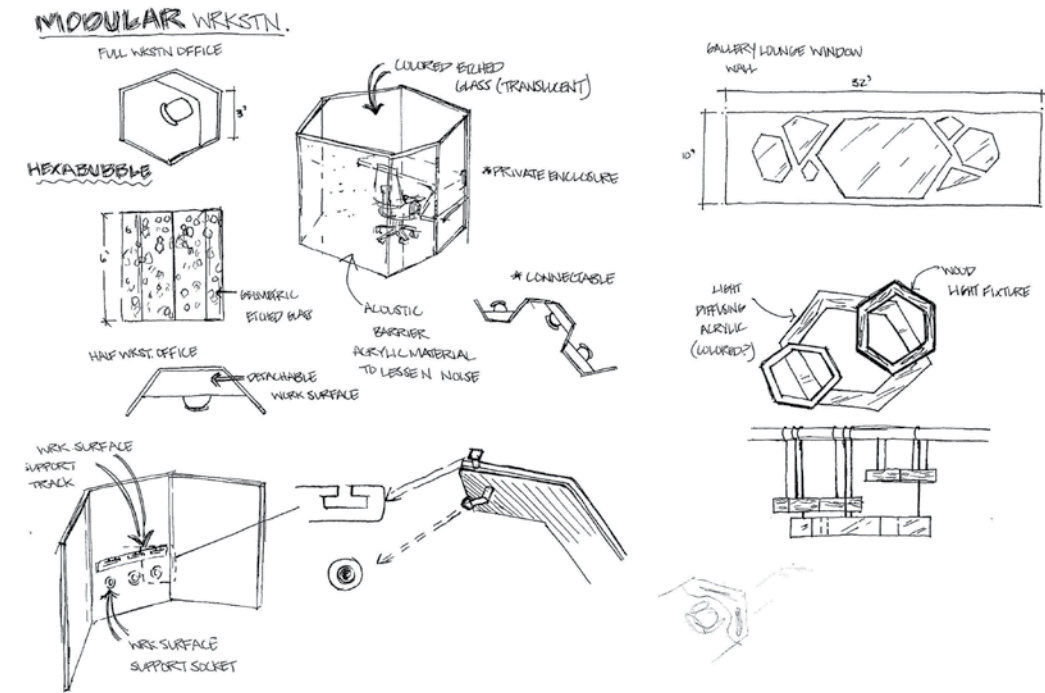
Polk & Schragger Ad Agency offers a collaborative and creative work space that aims to enhance productivity and quality. It also provides a coworking space for those who need a quiet, yet inspiring atmosphere while they work. At Polk & Schragger, the initiative is to bring all ideas to the table and collaborate to create clever solutions.

### Concept

Exposure with the element of discretion help to create a collaborative workplace. With exposing material, such as translucent paneling, office workspaces will be open, allowing observation of creativity and productivity while encouraging a community of workers to include their creative input.



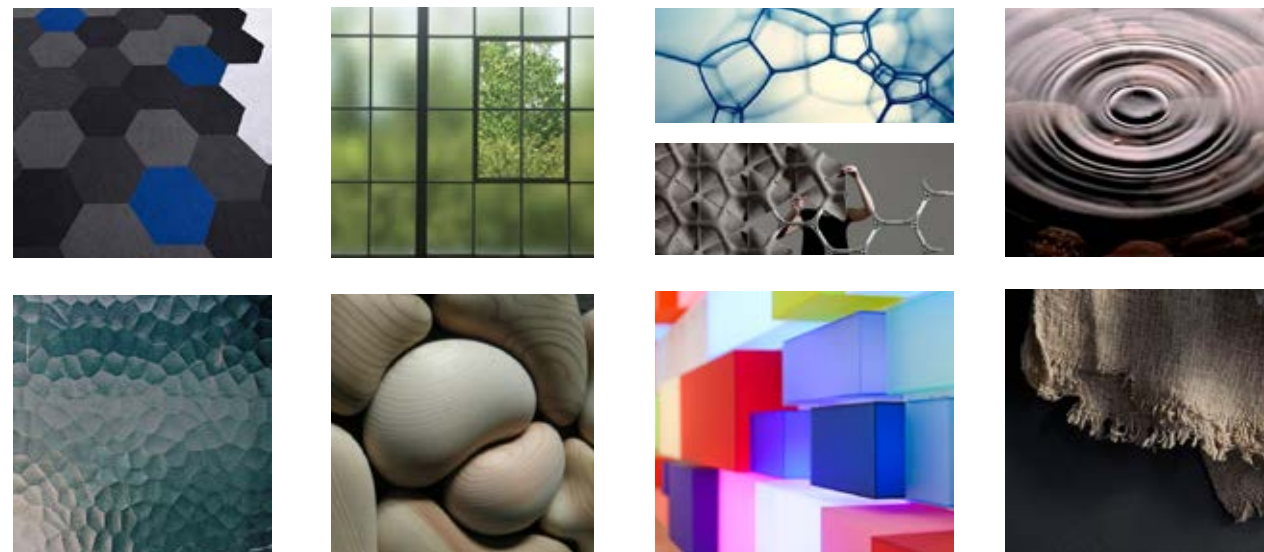
Reception Area



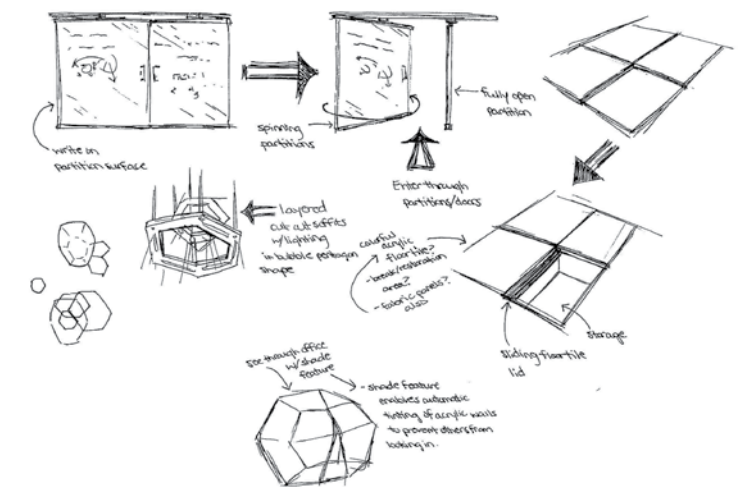
Workstation Design Sketches



Materials



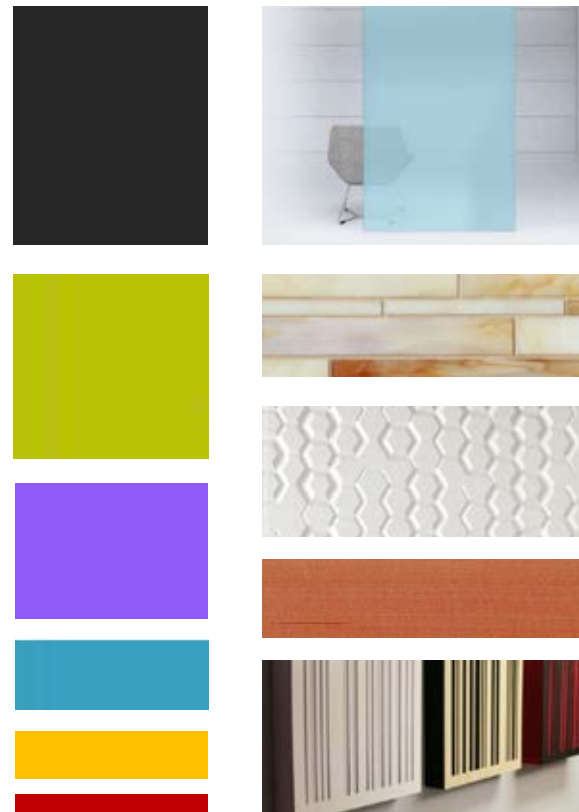
Conceptual Photos



Workstation Design Sketches



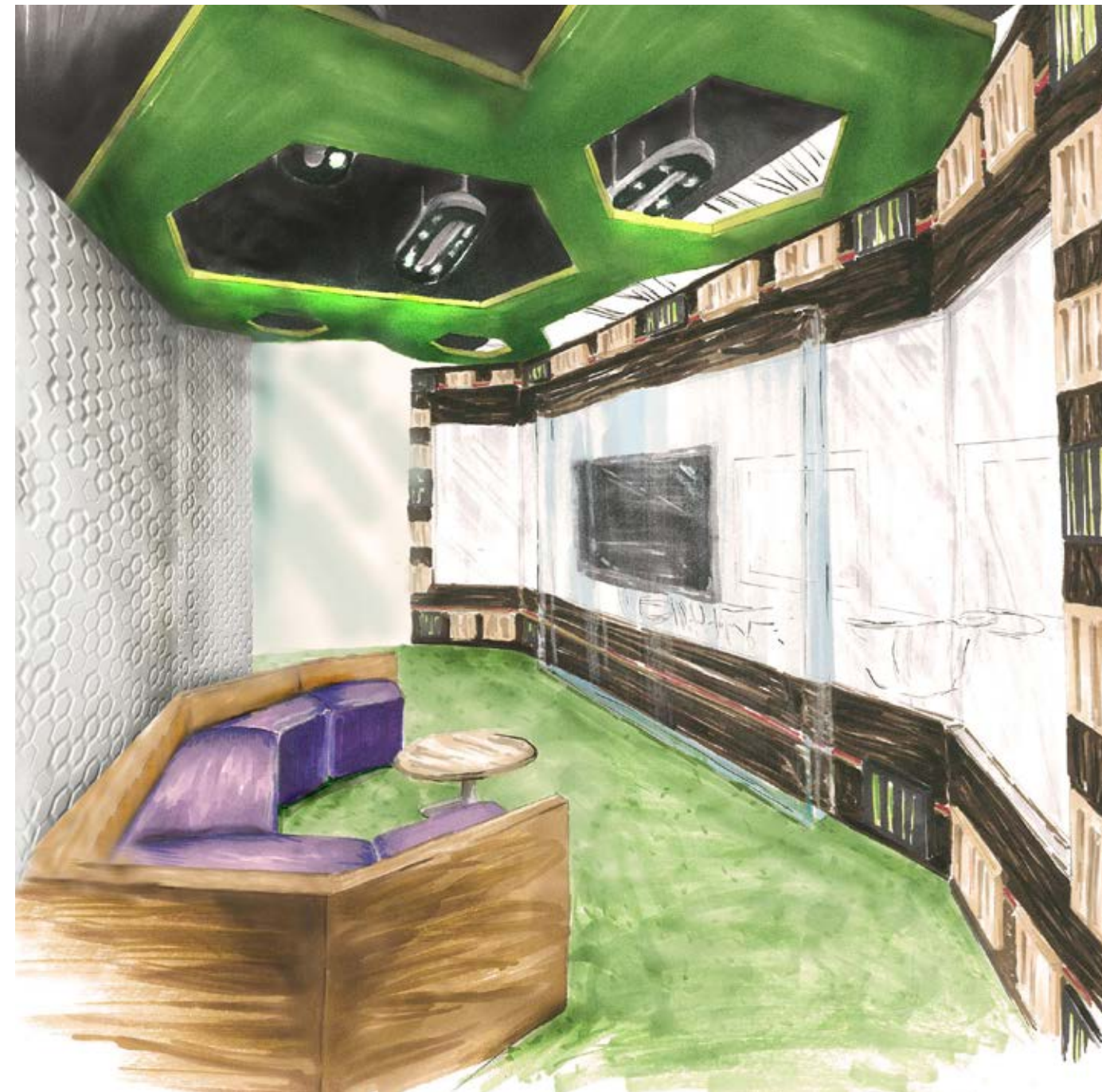
Breakroom & Kitchen



Finishes



Furniture & Fixtures



Medium Conference Room



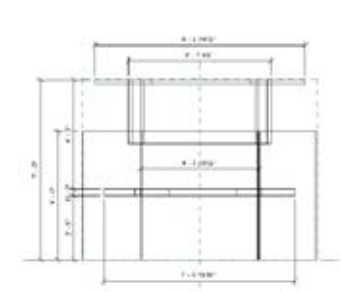
Floor Plan

Enlarged Workstation Plan Variation

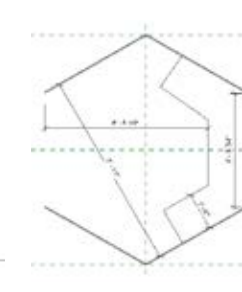
Exploded Isometric



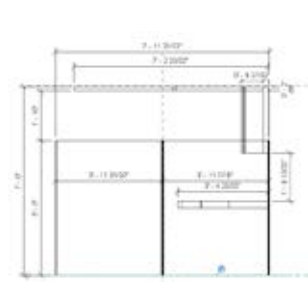
Front View



Top View



Side View



Workstation Diagrams

### Technique

SketchUp, Hand Rendering & Photoshop

### Overview

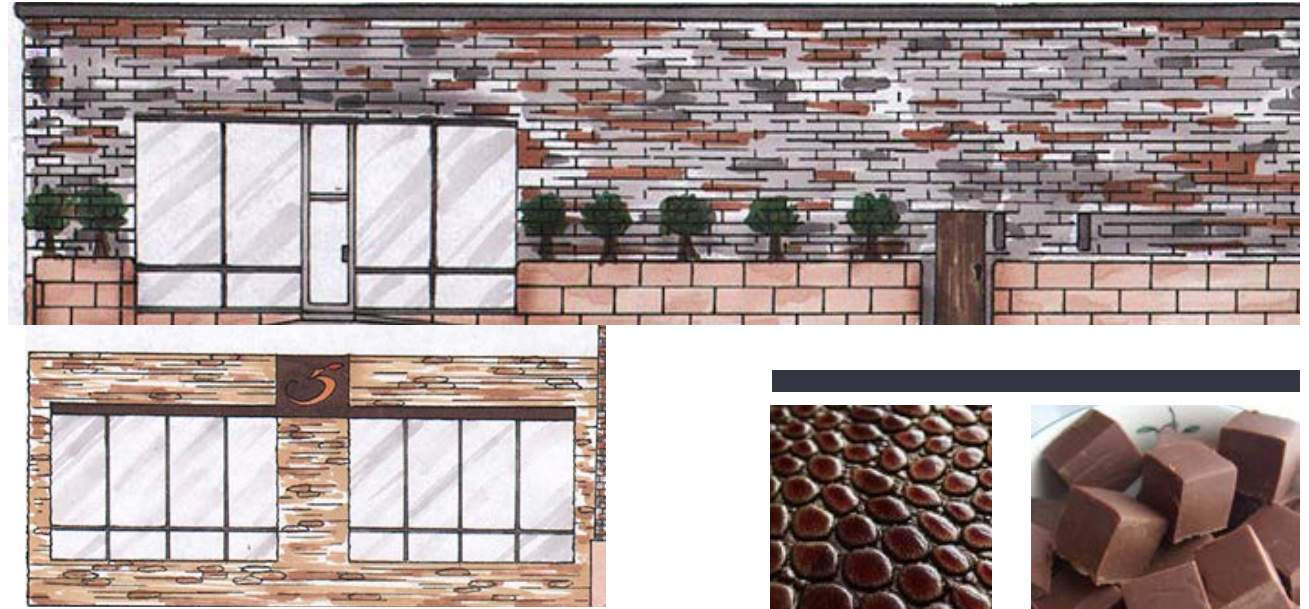
Aesthetically masculine, but contently prestine, 5 Refined offers an establishment for men to be groomed and enjoy exponential services that intend to refresh and refine them. It is a place where men reward themselves and share the company of new acquaintances.

### Concept

The inspiration of apples created the concept of stimulation of the five senses by incorporating elements similar to physical characteristics of an apple. The spa's intention is to refine its clients physically and mentally. The color, texture and shape of an apple provide the design elements that make this men's space unique and masculine.



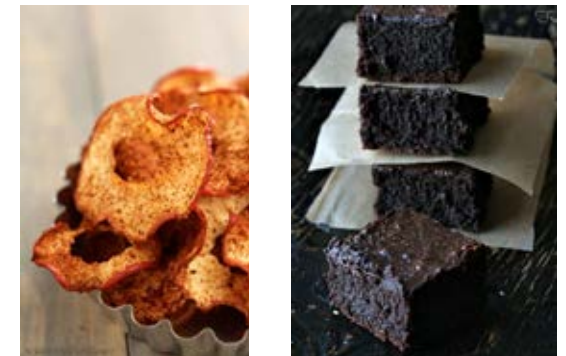
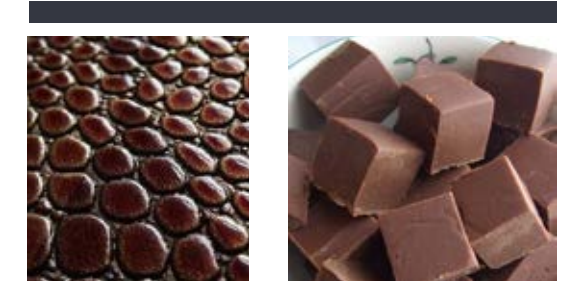
Building Exterior



Building Elevations



Bar & Lounge Area



Conceptual Photos



Technique  
SketchUp & Hand Rendering

Overview  
This studio apartment was designed to serve a tenant whose passion is music and social entertainment.

Concept  
To utilize the minimal space offered, the apartment was designed around the concept of an open plan and versatility. Each space is fluid from one to the next, yet still distinct in function. Versatility is present in the custom made bed unit that contains speakers, shelving units, desk space, and storage.



Living Room



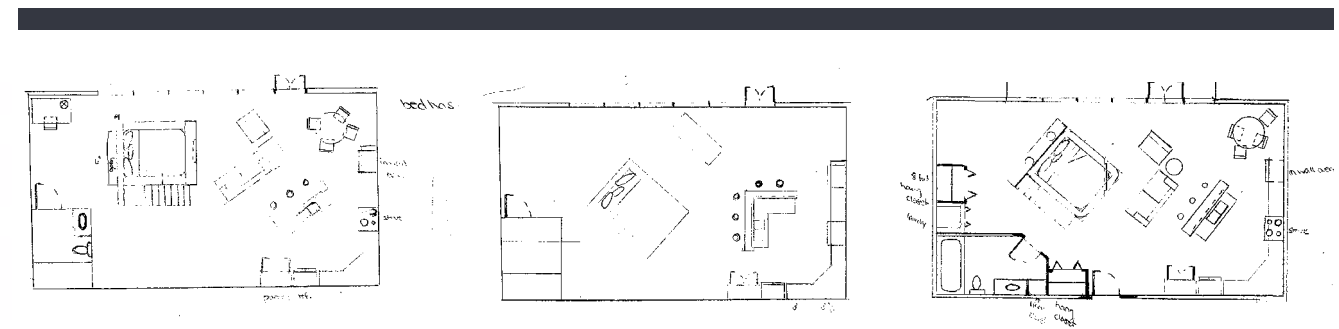
Floor Plan



Entry Elevation



Inspiration Photos



Floor Plan Sketches

# Construction Docs

Technique  
Revit

Overview

A compilation of millwork drawings, schedules, and sections to represent the detail work of a studio apartment.

Concept  
Not Applicable

Tenzi Residence Studio Apartment

**KEY NOTES**

1. CUSTOM MILLWORK
2. TUB PLATFORM
3. OPEN SPACE FOR WORK SPACE
4. CONCEALED STORAGE SPACE
5. BUILT-IN SHELVING
6. BUILT-IN APPLIANCE LIGHT

REFERENCE BACK TO INDICATED SHEET FOR ADDITIONAL NOTES

**TENZI RESIDENCE**  
383 Cedar St.  
Charlotte, NC 28210

Studio Apartment Construction Documents  
Dimension Floor Plan

A-1

**ELECTRICAL LEGEND**

- SWITCH
- OUTLET
- RECEPTACLE
- CONDUIT
- WIRE
- TRAY
- TRUNKING
- TELEPHONE
- DATA
- COAXIAL
- PLUMBING
- MECHANICAL
- STRUCTURAL

**TENZI RESIDENCE**  
383 Cedar St.  
Charlotte, NC 28210

Studio Apartment Construction Documents  
Lighting & Electrical

A-2

**NOTES**

- ALL OPEN FLOOR IS SOFTWOOD (CEDAR)
- RED MILLWORK TO BE BRASSWOOD
- ALL CABINETS TO BE TEAK
- ALL BASEBOARDS TO BE COGNAC COLOR
- ALL COUNTERTOPS TO BE STAR BEACH GRANITE
- ALL WALLS NOT SPECIFIED ARE TO BE CINNAMON TOAST

REFERENCE FOR ADDITIONAL FINISH INFO

REFERENCE FOR ADDITIONAL FURNITURE INFO

**LEGEND**

- W1 CEDAR SOFTWOOD
- W2 TEAK HARDWOOD
- W3 DARK BRAZILWOOD
- T 4" X 4" PORCELAIN TILE
- F1 CANARY YELLOW
- F2 CINNAMON TOAST
- B BEIGE
- F4 CYAN
- 17" X 4" PORCELAIN TILE
- GRANITE COUNTERTOP
- HARDWARE

**TENZI RESIDENCE**  
383 Cedar St.  
Charlotte, NC 28210

Studio Apartment Construction Documents  
Finish Plan

A-3

ITEM	LOCATION	PRODUCT	MANUFACTURER	DESCRIPTION
C1	KITCHEN	STAR BEACH GRANITE	LEGACY	BEIGE WITH CHARCOAL AND WHITE
H	KITCHEN	CABINETS HARDWARE	LEGACY	ALUMINUM W/ SATIN FINISH
T	KITCHEN	BACKSPLASH	LEGACY	BLUE AND CLEAR TILE W/ GLOSS FINISH
W1	FLOORS	CEDAR SOFTWOOD	BRUCE	LIGHT TAN W/ SATIN FINISH
W3	BED	DARK BRAZILWOOD	BRUCE	DARK REDDISH BROWN W/ SATIN FINISH
W2	CABINETS	TEAK	BRUCE	LIGHT REDDISH BROWN W/ SATIN FINISH
T	BATHROOM	PORCELAIN TILE	BRUCE	BUFF W/ ALTERNATING CYAN COLOR TILE W/ SEMI-GLOSS FINISH
F1	KITCHEN	FABRIC	SHERWIN WILLIAMS	CANARY YELLOW W/ SATIN FINISH
F2, F4	BATHROOM	FABRIC	SHERWIN WILLIAMS	CYAN W/ BEIGE ACCENT BORDER STRIPES W/ SATIN FINISH
F3	CLOSET	FABRIC	SHERWIN WILLIAMS	BEIGE W/ SATIN FINISH
F2	LIVING	FABRIC	SHERWIN WILLIAMS	CINNAMON TOAST W/ SATIN FINISH

**TENZI RESIDENCE**  
383 Cedar St.  
Charlotte, NC 28210

Studio Apartment Construction Documents  
Finish Schedule

A-4

ITEM #	QUANTITY	TYPE	LOCATION	MANUFACTURER	DESCRIPTION
F1	2	SEATING	DINING	ROSSETTO	SLANTED ARM CHAIR UPHOLSTERED W/ PASTEL TURQUOISE BACK/ARMS AND PASTEL YELLOW SEAT CUSHION
F2	2	SEATING	DINING	ROSSETTO	SLANTED ARM CHAIR UPHOLSTERED W/ PASTEL BLACK BACK/ARMS AND PASTEL TURQUOISE SEAT CUSHION
F3	4	SEATING	KITCHEN	ROSSETTO	ORANGE BAR STOOL
F4	2	SEATING	LIVING	ZUO	Lounge chair w/ black back/arms and turquoise seat
F5	1	SEATING	LIVING	ZUO	SOFA w/ black back and canary yellow seat cushion
F6	1	SEATING	BED	ZUO	WOODEN chair w/ upholstered back and seat cushion
F7	1	DESK	BED	ZUO	WOODEN DESK
F8	1	TABLE	LIVING	ZUO	COFFEE TABLE W/ STAINLESS STEEL FRAME W/ GLASS TABLE TOP
F9	2	TABLE	LIVING	ZUO	SIDE TABLE W/ STAINLESS STEEL FRAME W/ GLASS TABLE TOP

**TENZI RESIDENCE**  
383 Cedar St.  
Charlotte, NC 28210

Studio Apartment Construction Documents  
Furniture Schedule

A-5

**DOOR & WINDOW SCHEDULE**

ITEM #	SIZE	DOOR/WIN	FRAME	HARDWARE	ELEVATION
1	2'-0" x 7'-0"	P2	ALUM/F1	SET 1	A
2	6'-0" x 7'-0"	F1	ALUM/F1	SET 1	B
3	2'-10" x 7'-0"	F1	WDL/F1	SET 2	C
4	2'-10" x 7'-0"	F1	WDL/F1	SET 2	C

**FRAME FINISH**

F1 - ONE COAT PRIMER, 2 COATS FINISH PAINT SEMI-GLOSS, SHERWIN WILLIAMS, COLOR TBD BY OWNER

F2 - 1/4" TRANSLUCENT TAMPED GLASS W/UV BLOCKER

WD - TEAK WOOD FRAME

**FRAME TYPE**

F1 - ALUM - WILSON SERIES 438 FRAME

WD - TEAK WOOD FRAME

**HARDWARE**

SET 1

- 1 PAIR OF FLUSH HINGES
- 1 SET PUSH/PULLS
- 1 SET CLOSURE
- 1 FLOOR STOP
- 1 DOOR SWEEP

SET 2

- 1 PAIR OF FLUSH HINGES
- 1 SET ENTRANCE LOCK
- 1 SET CLOSURE
- 1 FLOOR STOP
- 1 LATCH GUARD
- 1 DOOR SWEEP

**DOOR/WINDOW FINISH**

F1 - ONE COAT PRIMER, 2 COATS FINISH PAINT SEMI-GLOSS, SHERWIN WILLIAMS, COLOR TBD BY OWNER

F2 - 1/4" TRANSLUCENT TAMPED GLASS W/UV BLOCKER

**TENZI RESIDENCE**  
383 Cedar St.  
Charlotte, NC 28210

Studio Apartment Construction Documents  
Door/Window Schedule

A-6

**TENZI RESIDENCE**  
383 Cedar St.  
Charlotte, NC 28210

Studio Apartment Construction Documents  
Interior Elevations

A-7

**TENZI RESIDENCE**  
383 Cedar St.  
Charlotte, NC 28210

Studio Apartment Construction Documents  
Vertical Elevations

A-8

**TENZI RESIDENCE**  
383 Cedar St.  
Charlotte, NC 28210

Studio Apartment Construction Documents  
Vertical Elevations

A-8.1

Construction Documents

**Technique**

Revit, Hand Rendering & Photoshop

**Overview**

Tapout is a social power tower in which coffee and beer are the fuel. This brewery permits intimate conversation as well as energetic and lively interaction. Any person can find their place in Tapout and for those who want to expand out of their comfort zone, Tapout will ease them out of their shell, giving them the social experience they desire.

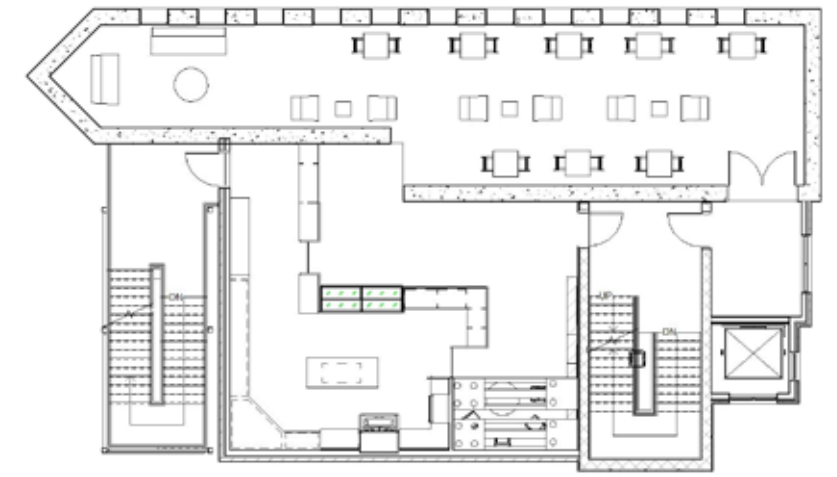
**Concept**

To promote the social atmosphere, the concept of levels was utilized. Each floor represents a level of social energy suited for the atmosphere. The first and second floor are the quiet zones, the third floor is the wake zone, the fourth floor is the hype zone, and the fifth floor is the tapout zone. As you progress to the next level of the tower, so do the energy and drinking experience. Each level's social energy is translated through color and lighting. Warm, yellow tones and moderate lighting symbolize high energy while cool, blue tones and dim lighting symbolize calm, relaxing energy.

**Hospitality**



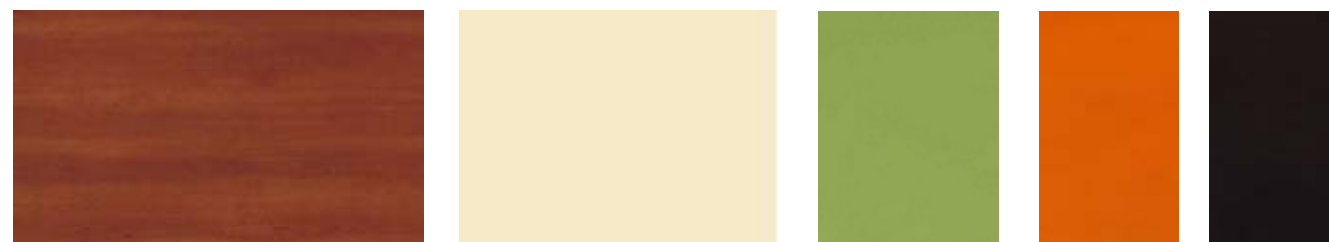
Level 2 Floor Plan



Level 2 Floor Plan



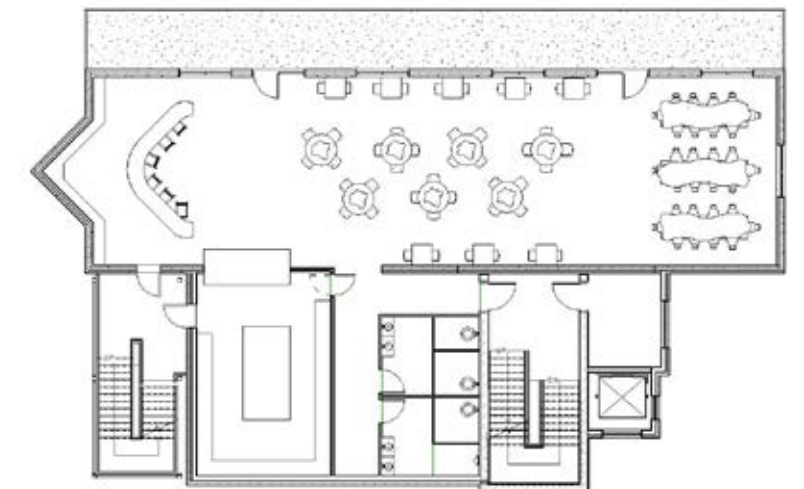
Level 3, Restaurant & Bar



Level 3 Finishes

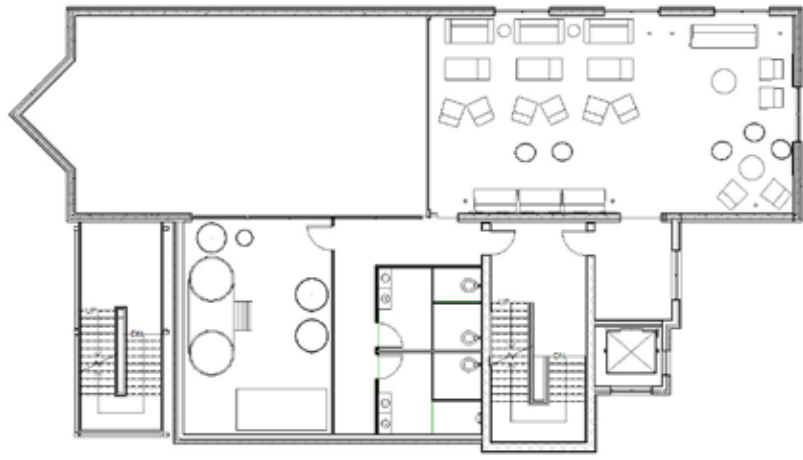


Level 2, Coffee Cafe



Level 3 Floor Plan

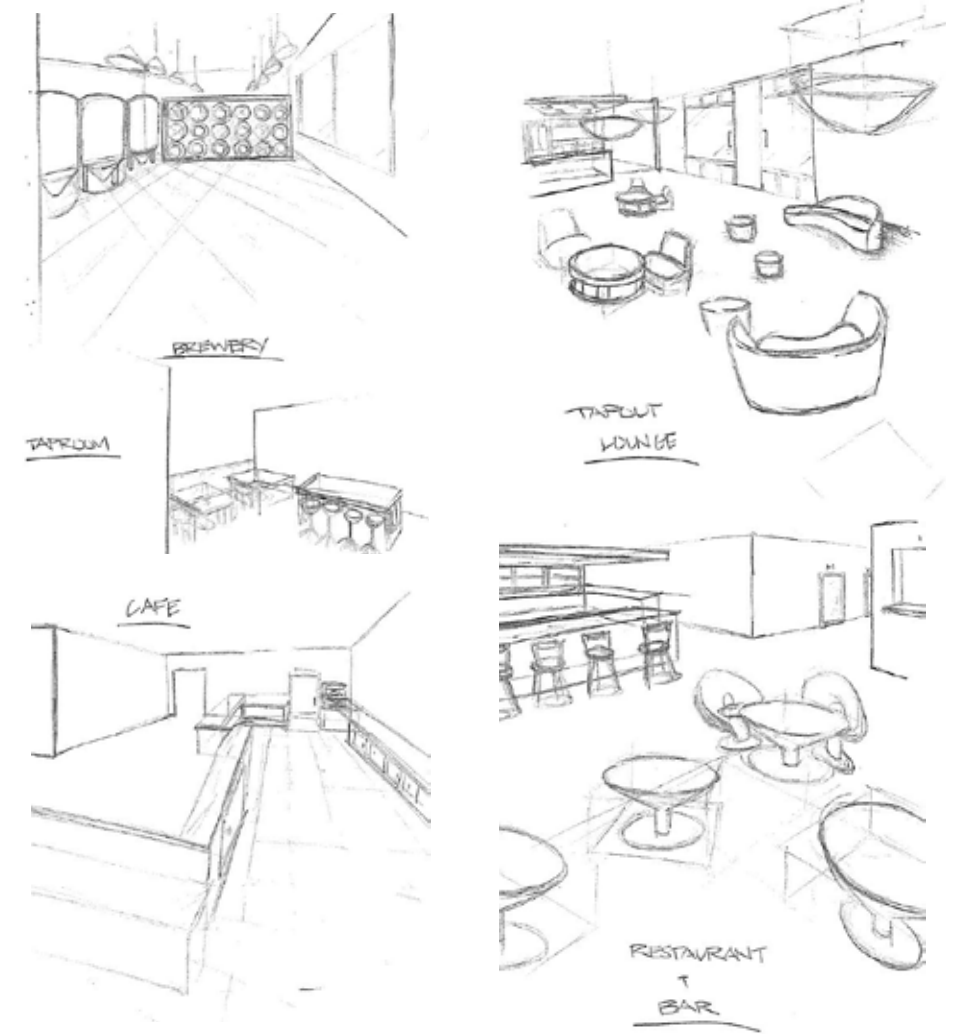




Level 4 Floor Plan



Level 4 Finishes



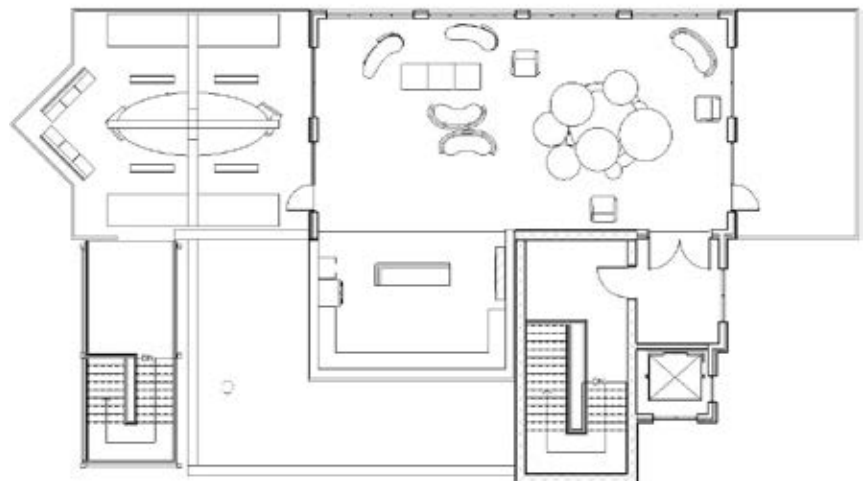
Sketches



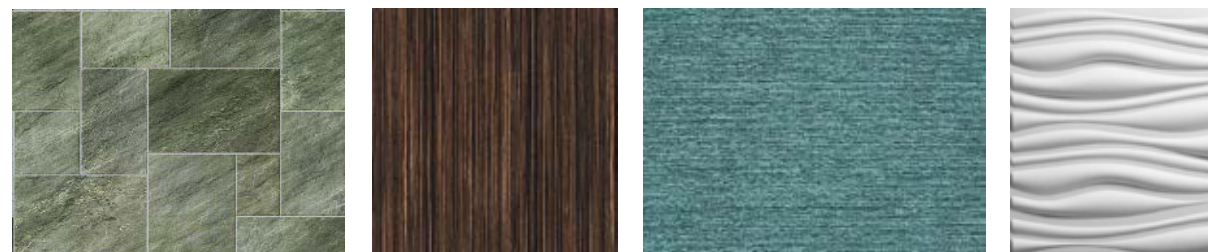
Level 4, Taproom Lounge



Level 5, Tapout Lounge Exterior



Level 5 Floor Plan



Level 5 Finishes



5th Floor Interior

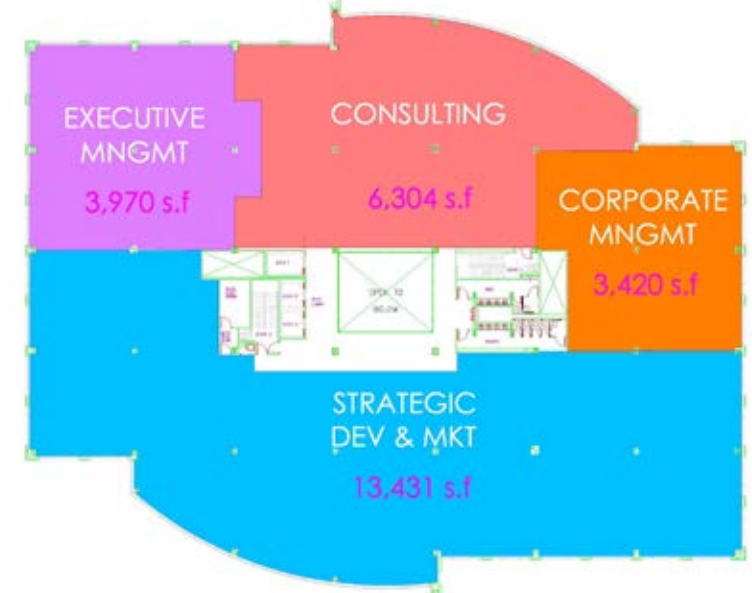
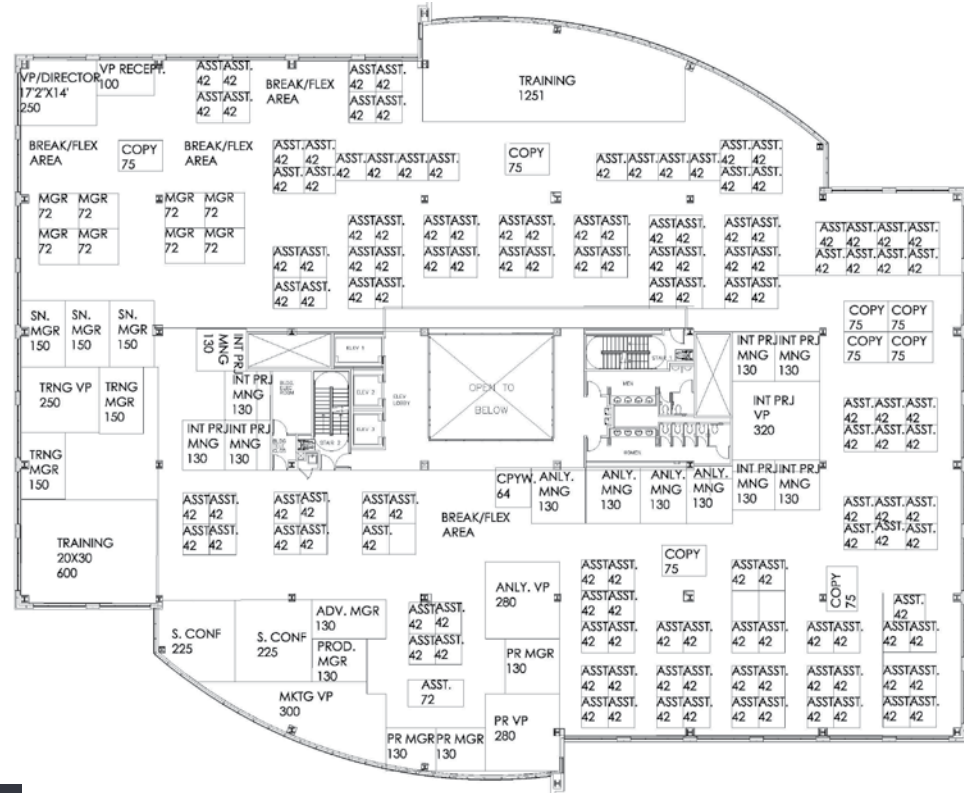
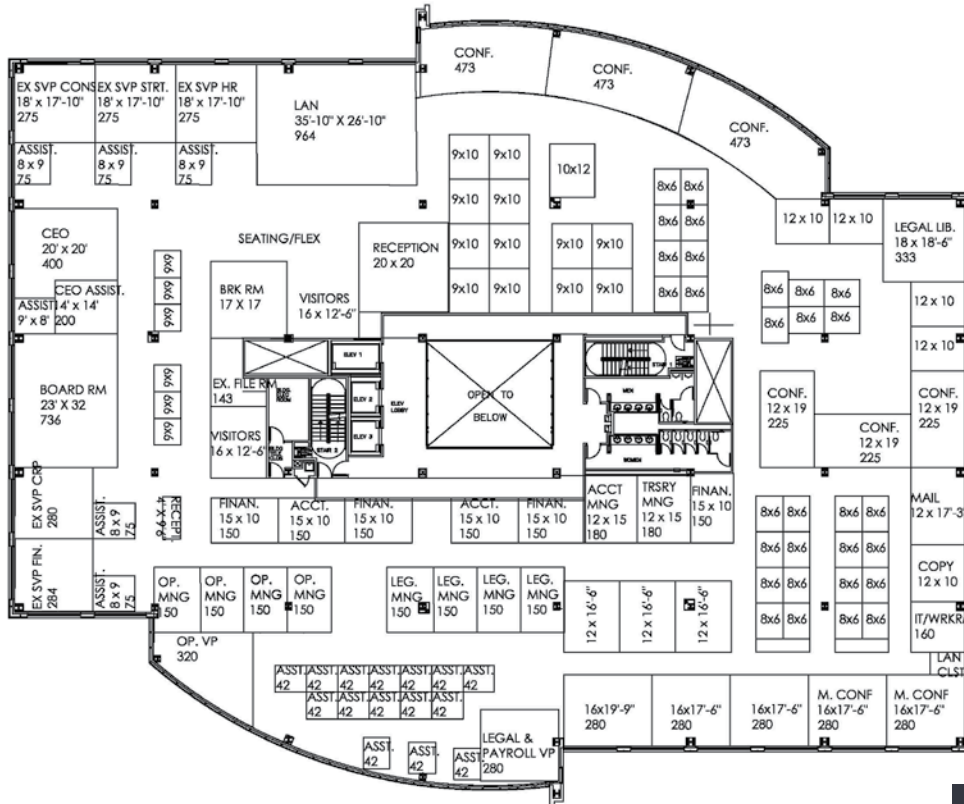
Technique  
AutoCAD & Revit

Overview

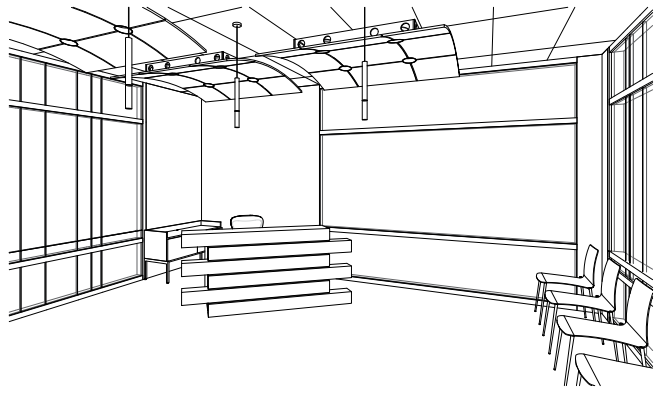
The task of this 60ks.f. building was to strategically space plan for a corporate office that offered a refreshing and motivating environment. The goal was to arrange the offices relative to the importance of their required communication amongst each other.

Concept

The symbolism of community served as the concept of this corporate office in that the idea implies group interaction. The space planning translates community through grouped seating and nook seating. Each desk belong to a group in which communication can take place and ideas can be shared. The nooks are created by the office associates that are a part of the same department to enhance and effectively encourage work productivity.

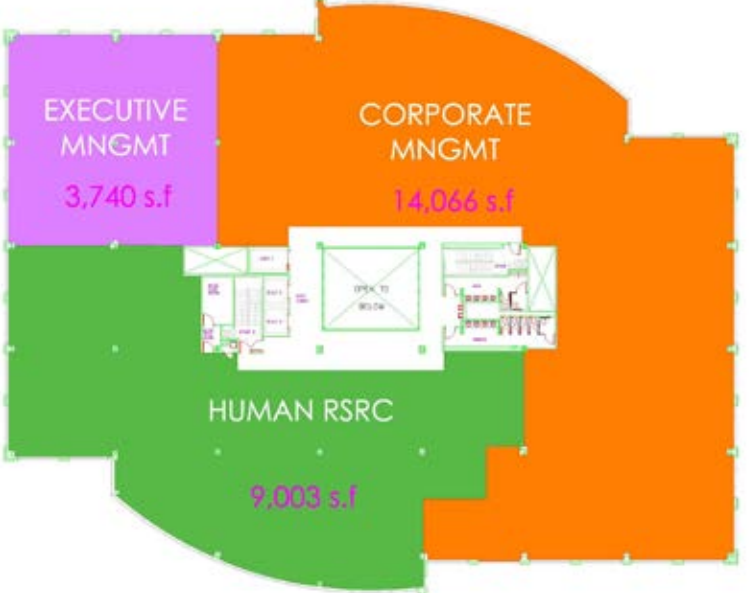


Level 1 Floor Plan

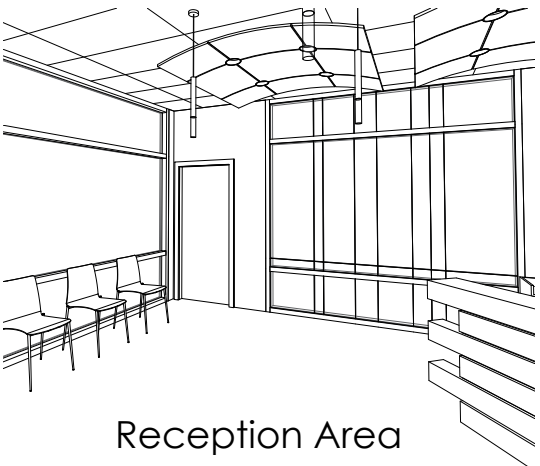


Block Plan Legend

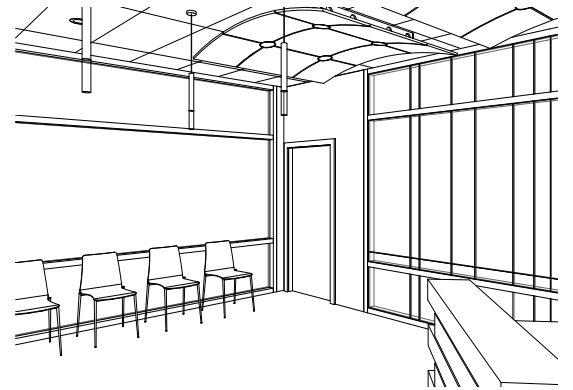
- CORPORATE MNGMT
- HUMAN RSRC
- EXECUTIVE MNGMT
- STRATEGIC DEV & MKT
- CONSULTING



Level 2 Floor Plan



Reception Area



### Technique

Hand Rendering, SketchUp & Photoshop

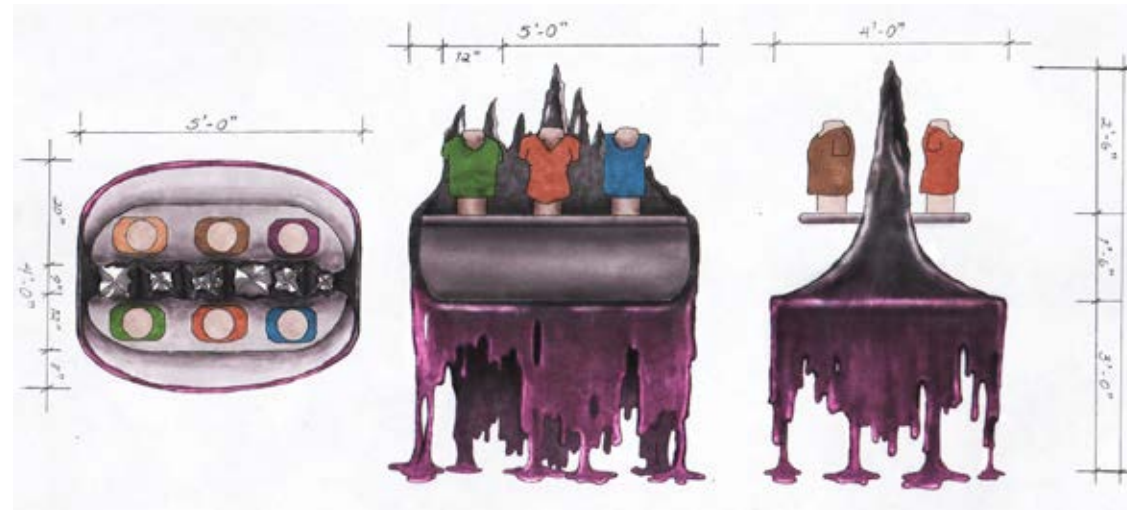
### Overview

Boundless is a high-end, luxury t-shirt retailer where consumers customize their design to enable consumers to expand their creativity. Boundless exclusively offers quality products encouraging consumers to think outside the atmosphere of the 'creative box'. Boundless is exclusive to those who cross boundaries. By the end of their shopping experience, the t-shirt they leave with will be the inspiration for their next purchase

### Concept

Boundless implements characteristics of surrealism to engage the consumer in developing a design and their shopping experience. Organic shapes, proportionality, and illusion are incorporated into the space to portray an unnatural space.

## Retail



Product Display Orthographic



Shelving Display & Fitting Room Elevation



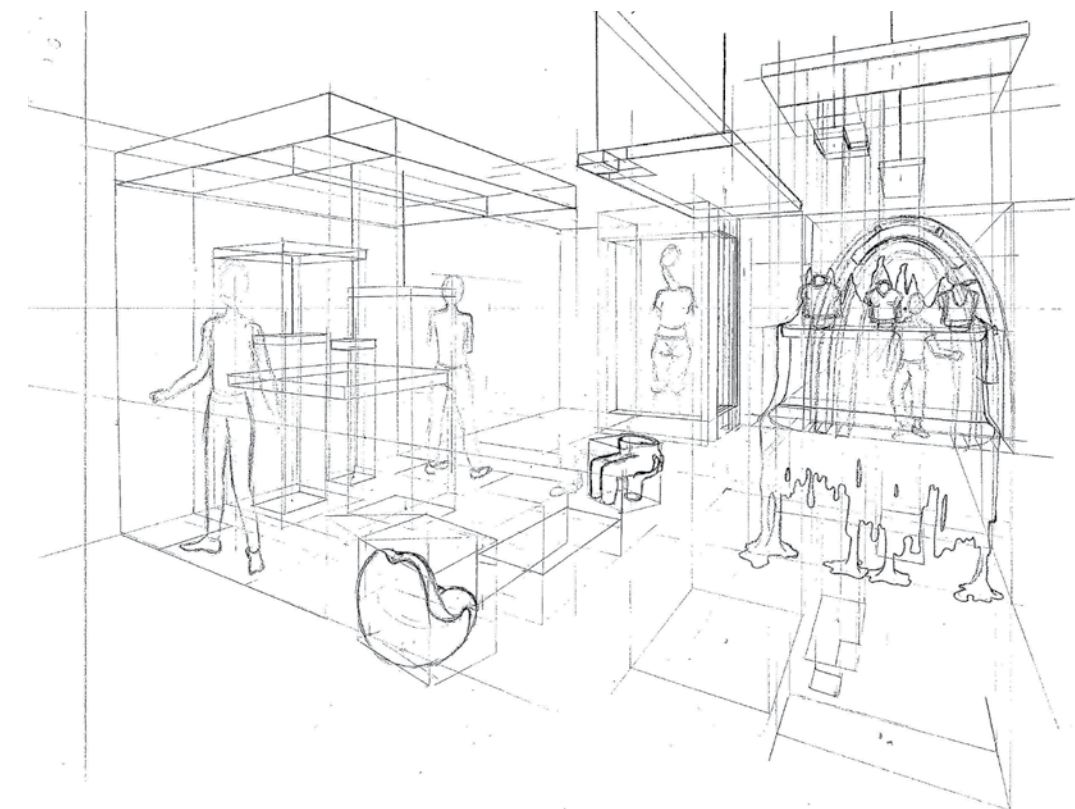
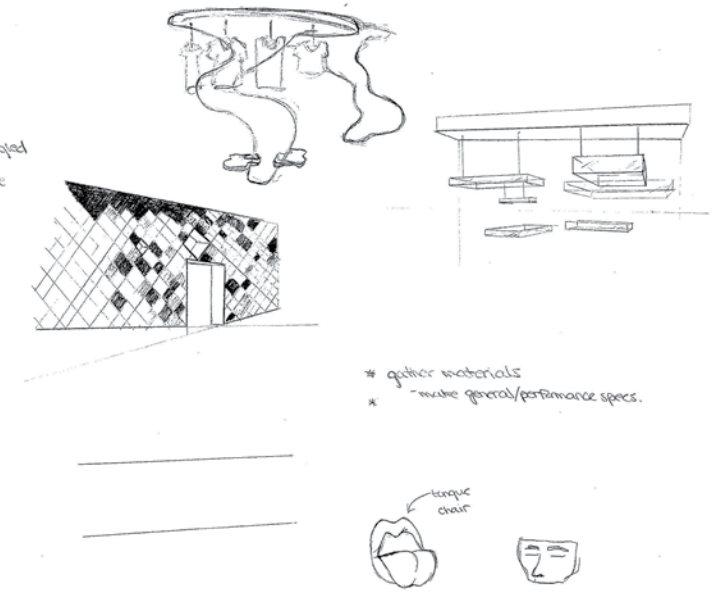
Sales Floor



Conceptual Photos

#### Kit of parts

- \* museum - large scale / abstract
- \* table - melt/dripping
- \* soffit - clean, sharp floating panels
- \* fitting - dissipating diamond wall; arched
- \* mannequins - distorted/unproportionate



Sketches





Renderings | Personal Artwork

