

HILLARY
CORTEVILLE

INTERIOR
DESIGN
PORTFOLIO

COMMERCIAL: POLK SCHRAGER



This project centered around desiging a coworking space within the marketing company Polk Schragger.

The concept was to create an **office environment** that held **key elements** of a **residence** as the user move through the space.

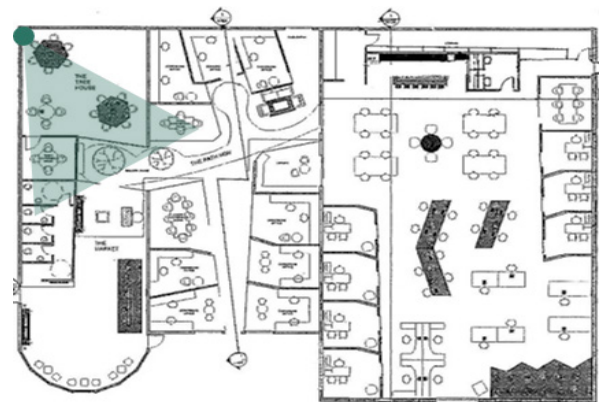
The space was broken up and designed to move from a **social space to more privatized** where the "heart" is, Polk Schragger.



COWORKING SPACE



ENTRY PERSPECTIVE



Wood Wall Accent



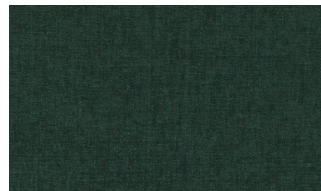
Mural Wall Paint



Brick



Flooring

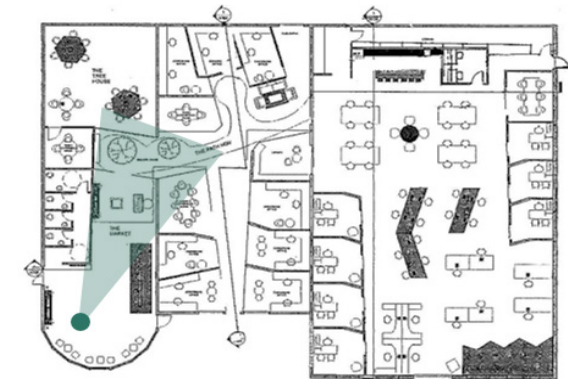


Chair Fabric

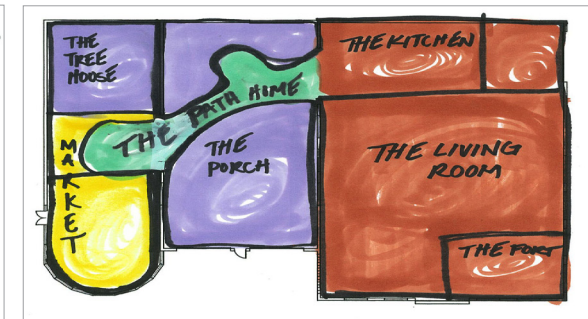
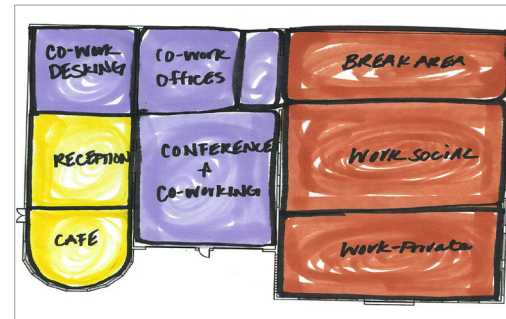
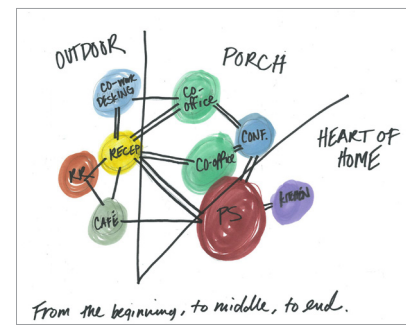
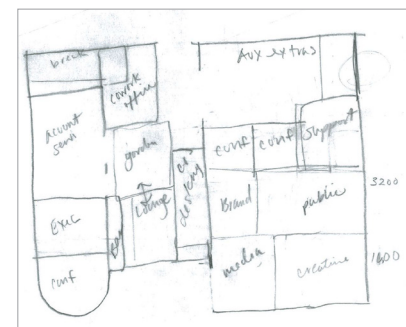
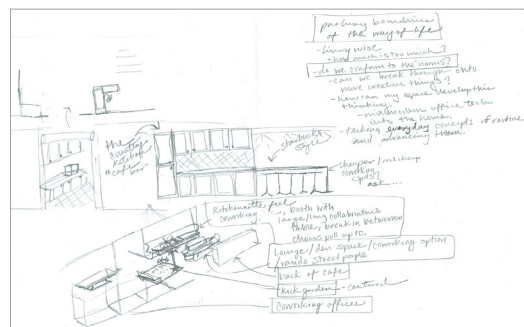
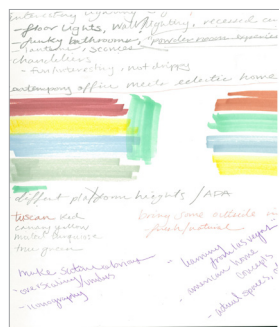


Cafe Counter Wood

The blocks below explain the movement through the space. From the "market" to the "porch" then to the "heart of the home".

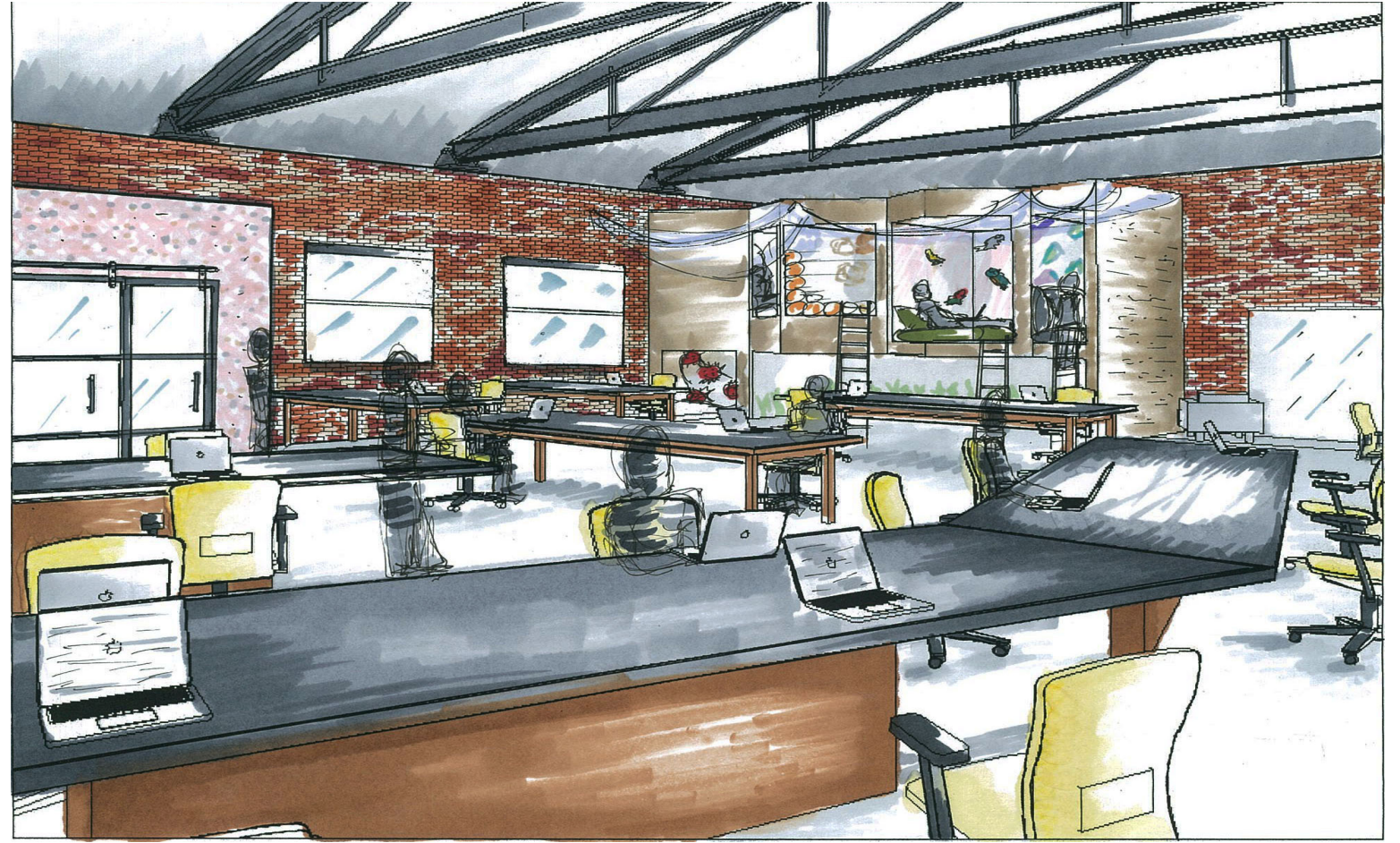


THE PROCESS

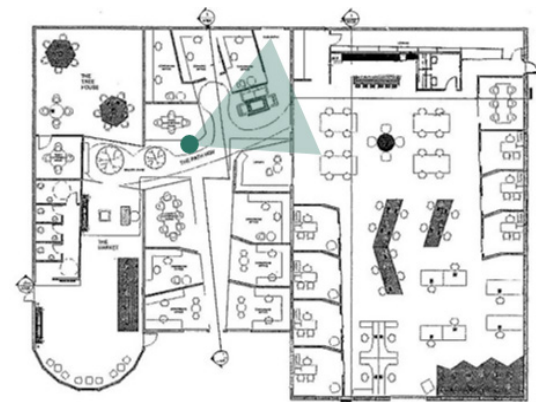




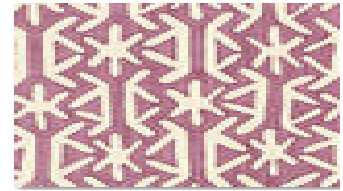
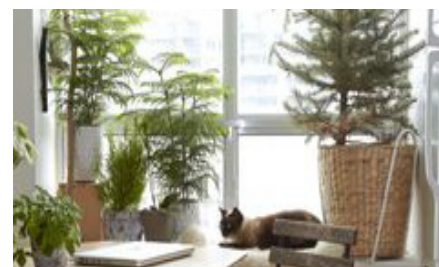
ENTRANCE TO POLK SCHRAGER



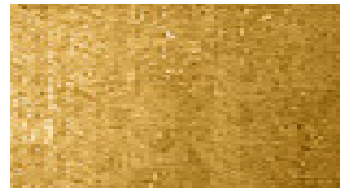
POLK SCHRAGER



INSPIRATION



Chair Fabric



Gold Accent Wallpaper



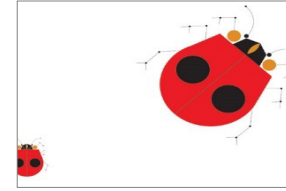
"Road Home" Flooring



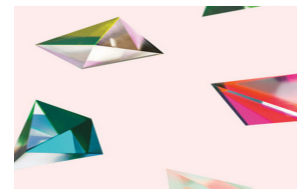
Rustic Wood Wallpaper



"Living Room" Wallpaper



"Living Room" Wallpaper



"Living Room" Wallpaper



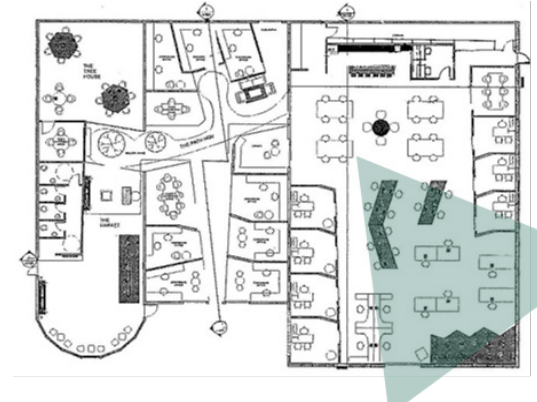
"Living Room" Wallpaper



Task Chair



Task Surface



"MORE RECEPTIVE TO THE TASTES AND VALUES OF 'COMMON' PEOPLE AND LESS IMMODEST IN THEIR ERECTIONS OF 'HEROIC,' SELF-AGGRANDIZING MONUMENTS." —ROBERT VENTURI



HOSPITALITY: PERK-up BREWHOUSE

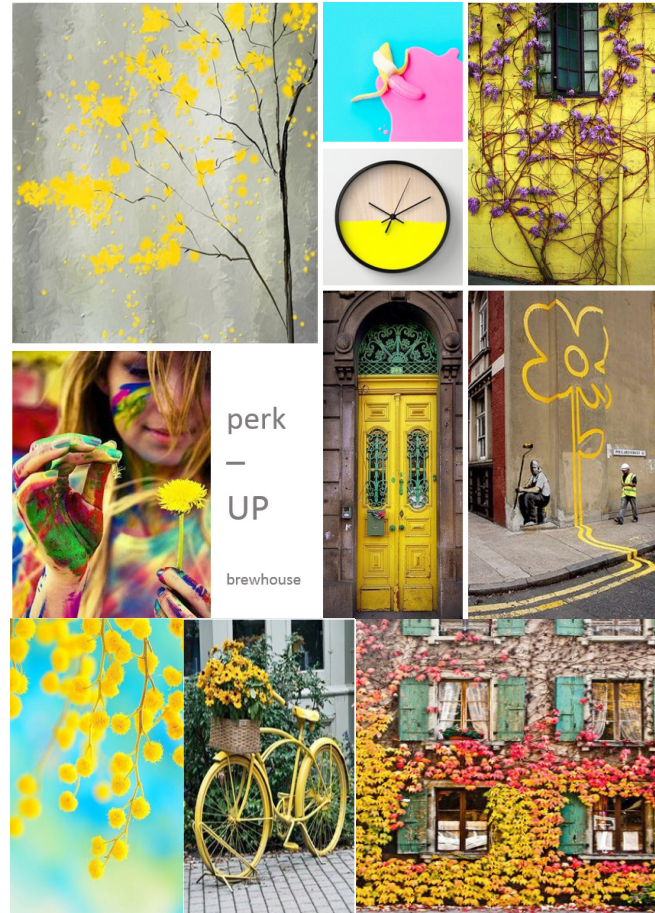
PERK - UP BREWHOUSE

This building, previously a pumphouse in Rock Hill, SC has the perfect location on the Catawba river for the redesign of PERK-up brewhouse.

PERK-up is a **coffee, brewery and restaurant**, providing the user with wonderful views of the river and the scenery from multiple dining options.

The concept behind the design is to travel through the **different levels of social interaction**. Starting with a storage level through the upstairs bar that offers a breathtaking view of the river.

PERK-up uses a lot of **exciting colors** throughout the space creating a **lively and energetic** environment.



perk
-
UP
brewhouse

COFFEE LOUNGE PERSPECTIVE



UPSTAIRS BAR PERSPECTIVE



Cafe Triangle Paint

Concrete Flooring

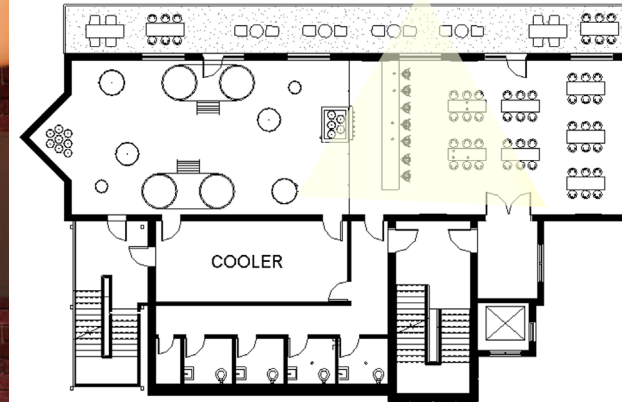
Original Pumhouse Brick

Accent Bar Wallpaper

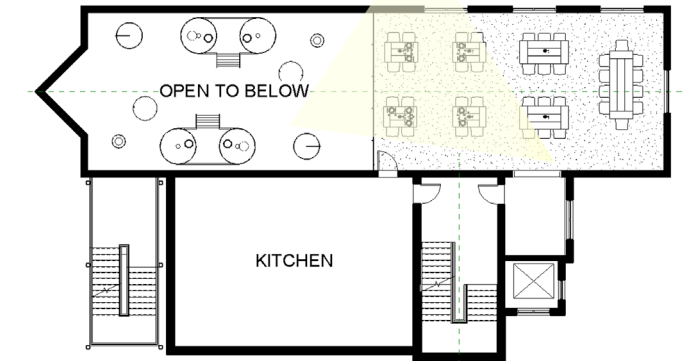
Tap Box Metal



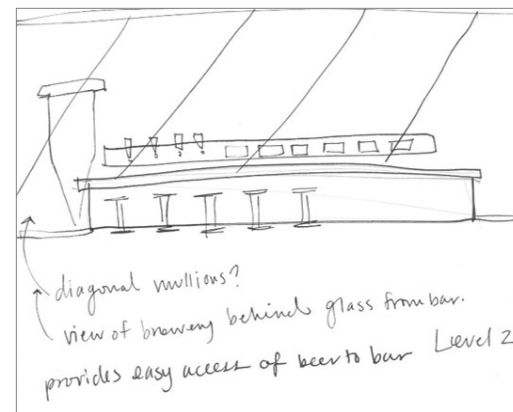
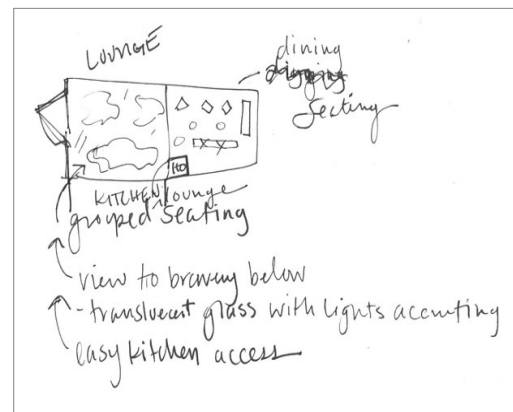
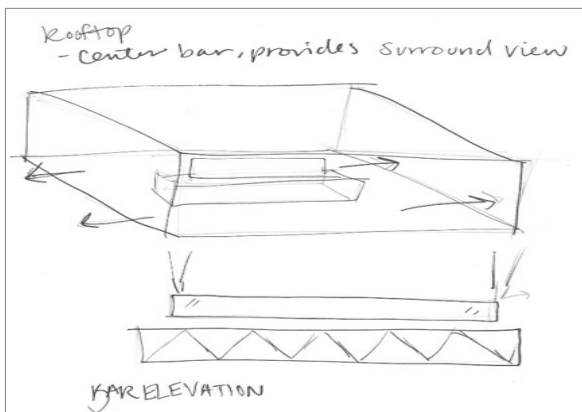
BREWERY AND TAPROOM



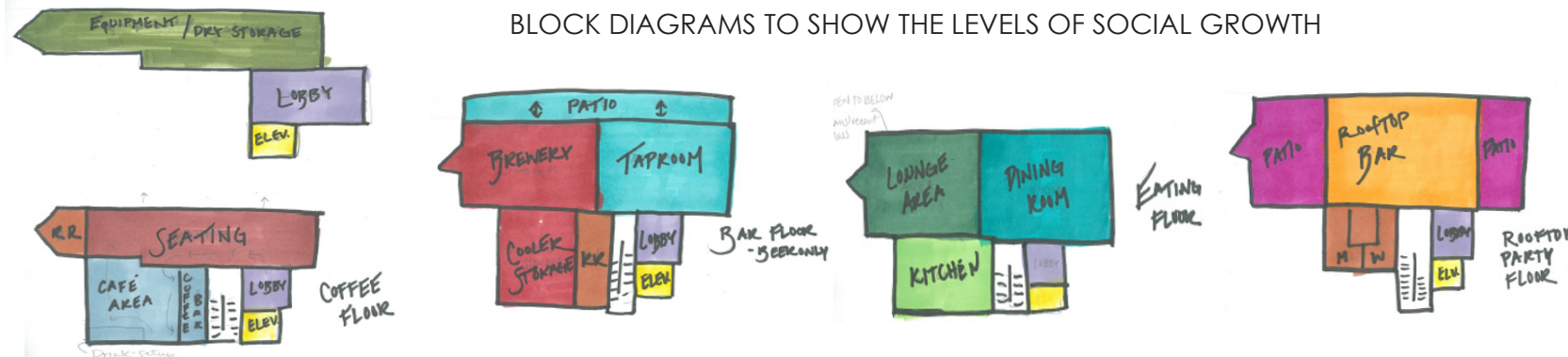
PERK - UP



DINING ROOM PERSPECTIVE



BLOCK DIAGRAMS TO SHOW THE LEVELS OF SOCIAL GROWTH

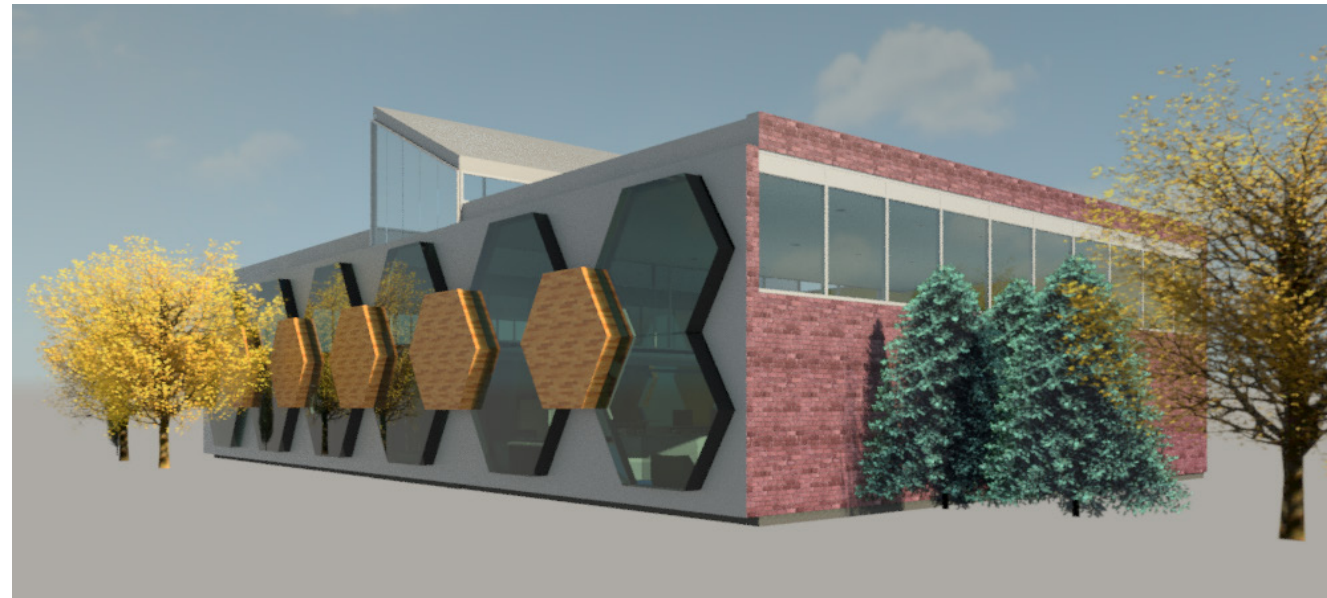


EDUCATION: OAKDALE MAKER SPACE



Oakdale Elementary is a STEAM school located in Rock Hill, SC. The project was to add an exterior **maker space** that would be flexible, aid in class activities, and allow for large volumes of students. The space is 3,900 sq. ft. with the possibility of being mobile to potentially move to other schools in the future.

Honeycomb shapes were used as the main exterior feature to create the idea of the children visit the **beehive** to work and achieve works of magic. Instead of using a great deal of color in the space, the color that will fill the space will be the work that they complete.



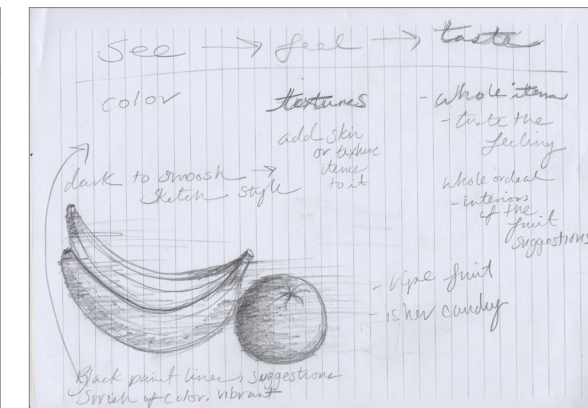
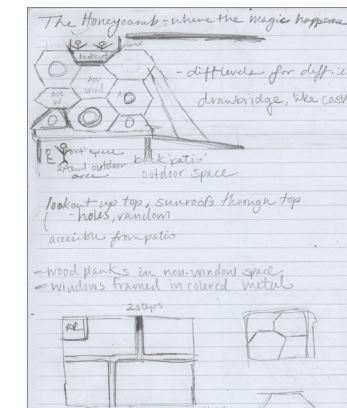
EXTERIOR VIEW



RIGHT SIDE PERSPECTIVE



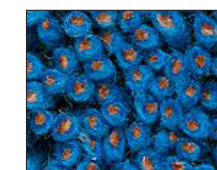
VIEW FROM ENTRANCE



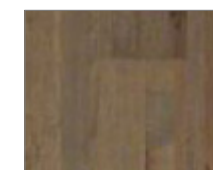
LVT Flooring



Entry Paint



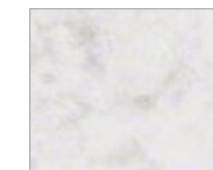
Upstairs Carpet



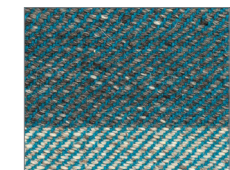
Center Flooring



Upstairs Carpet



Concrete Flooring



Entrance Carpet

STEAM IS AN EDUCATIONAL APPROACH TO LEARNING THAT USES SCIENCE, TECHNOLOGY, ENGINEERING, THE ARTS AND MATHEMATICS AS ACCESS POINTS FOR GUIDING STUDENT INQUIRY, DIALOGUE, AND CRITICAL THINKING.

HOSPITALITY: ASSISTED LIVING - THE GROVES



The Groves Assisted Living Facility focuses on creating a **lively and youthful atmosphere** with the geometric and clean lines of **Mid-Century Modern design**. This allusion is meant to evoke a sense of **nostalgia and reminiscence** for residents. There are ample windows and foliage in order to create an optimistic atmosphere.

Furthermore, the building is **extremely spacious and functional**, offering a full size high end dining room, activity room, courtyard, lobby, and two sitting areas. Unlike most traditionally designed facilities, the **clean geometry** and bright colors will offer a truly **unique experience** for all.

Ultimately, The Groves will serve as a **positive, healthy, and efficient home** to those who reside in it.



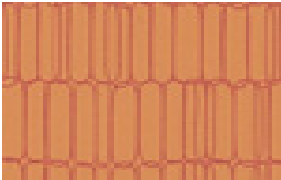
LOBBY PERSPECTIVE



DINING ROOM PERSPECTIVE



Accent Wallpaper



Chair Upholstery



Accent Wallpaper



Drapery



SITE PLAN



STUDIO ROOM



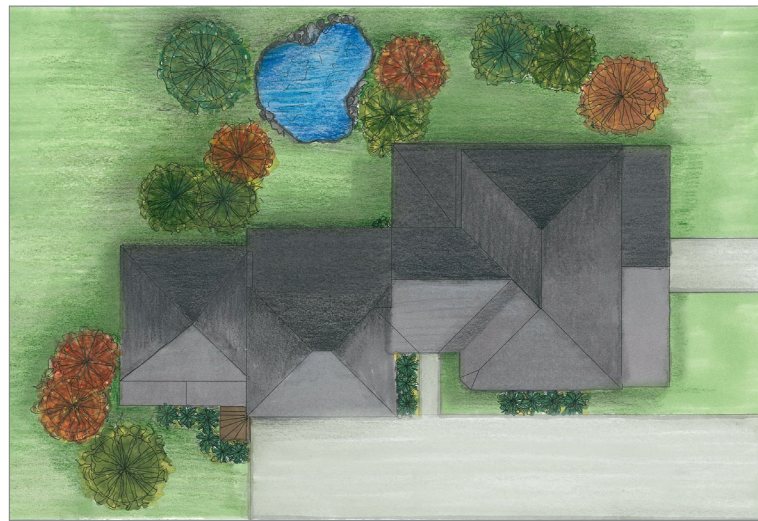
ONE BEDROOM



RESIDENTIAL: WAGNER RESIDENCE

This project was to renovate the Wagner residence to incorporate an edition for the handicap mother-in-law and accommodate their sons disability of bipolar depression.

They want to keep the **Rock Hill southern charm** all while renovating using **sustainable products, technology, and modern conveniences**. To achieve this the concept of the home will be **fresh and bright** as to keep the mood and atmosphere of the home elevated. Keeping the common space as open as possible encouraging plenty of **natural sunlight** and a feeling of freedom within the home.



SITE PLAN



LIVING ROOM PERSPECTIVE

SUSTAINABLE ELEMENTS

- Geothermal Heat pumps
- Solar water heater
- Real fireplace
- Trees to provide shade
- LED lighting
- Skylights
- LO-Flow toilets
- Light Sensors

ADA/UNIVERSAL DESIGN

- Entrance ways
- Ramps
- Lever door and sink handles
- 5' turning radius
- Hardwood floors for wheelchair ease
- Automatic doors for Mother-In-Law entrance with key code
- Lower counter height on first floor and M-I-L suite
- Lower security peep hole in M-I-L suite
- Door closers
- Front mounted controls on range

BIPOLAR DEPRESSION DESIGN SOLUTIONS

- Incorporate brighter and more colorful spaces
- Use whimsical patterns in the bedroom for visual excitement
- Common open areas for socializing with family and friends
- Well-lit bedroom



FIRST FLOOR PLAN

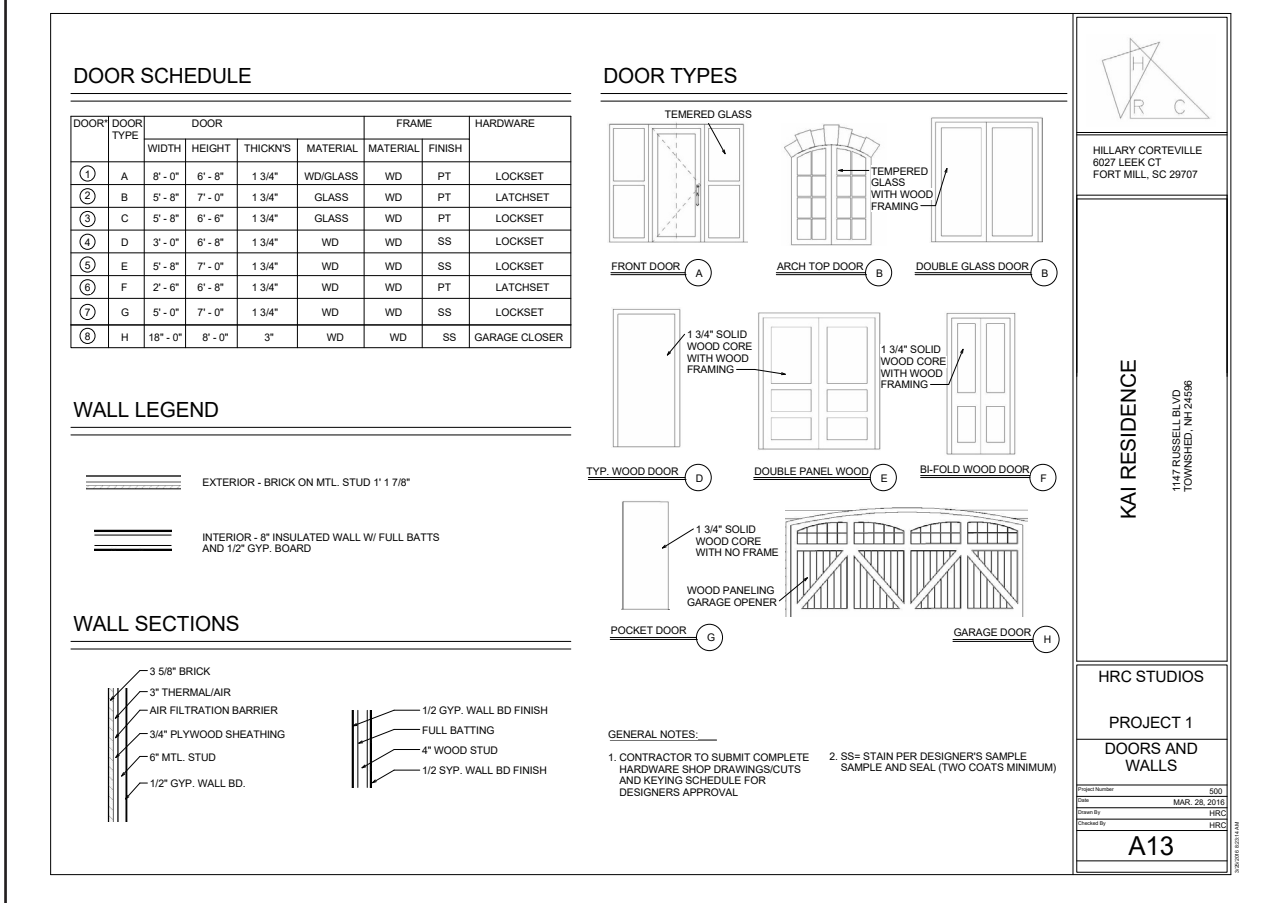
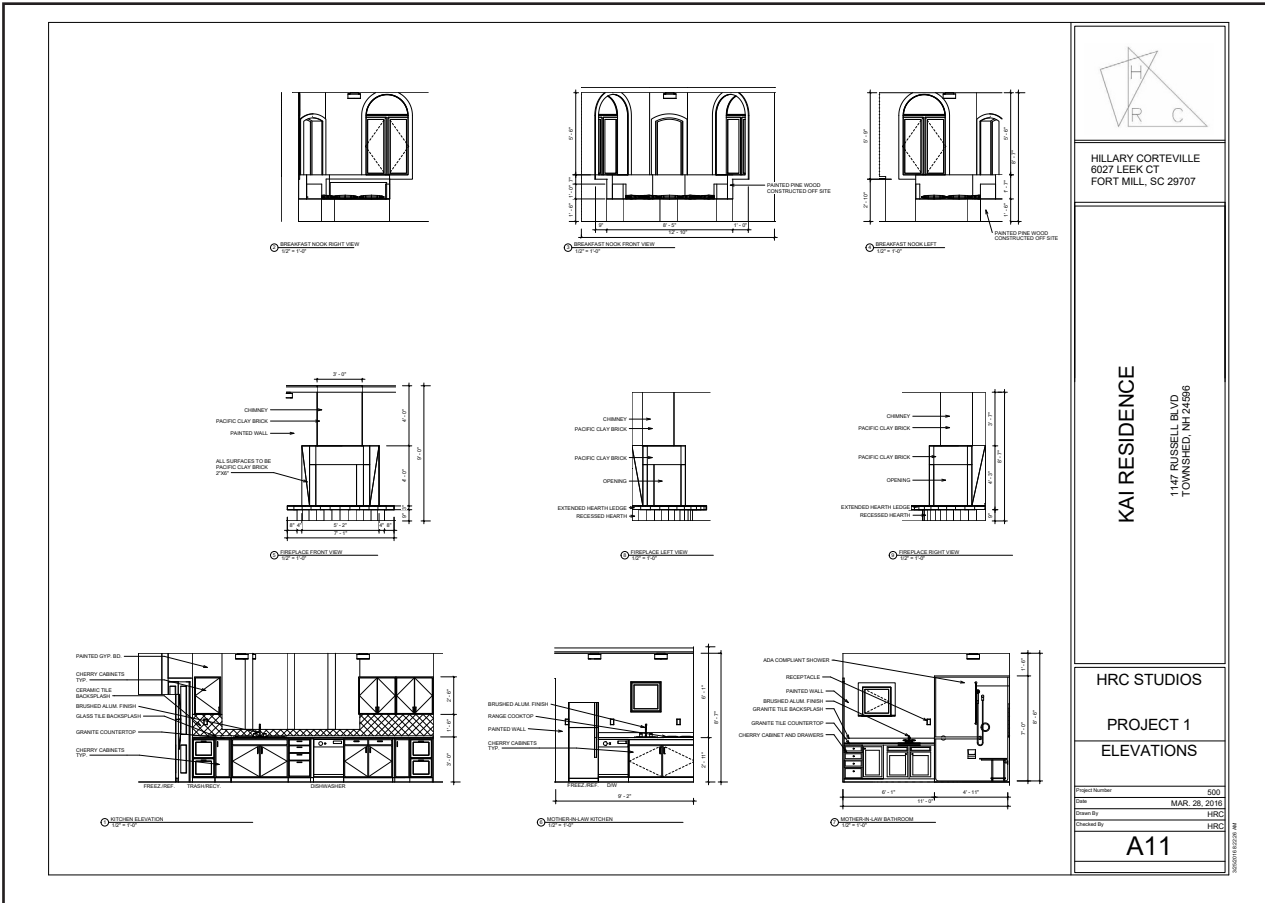
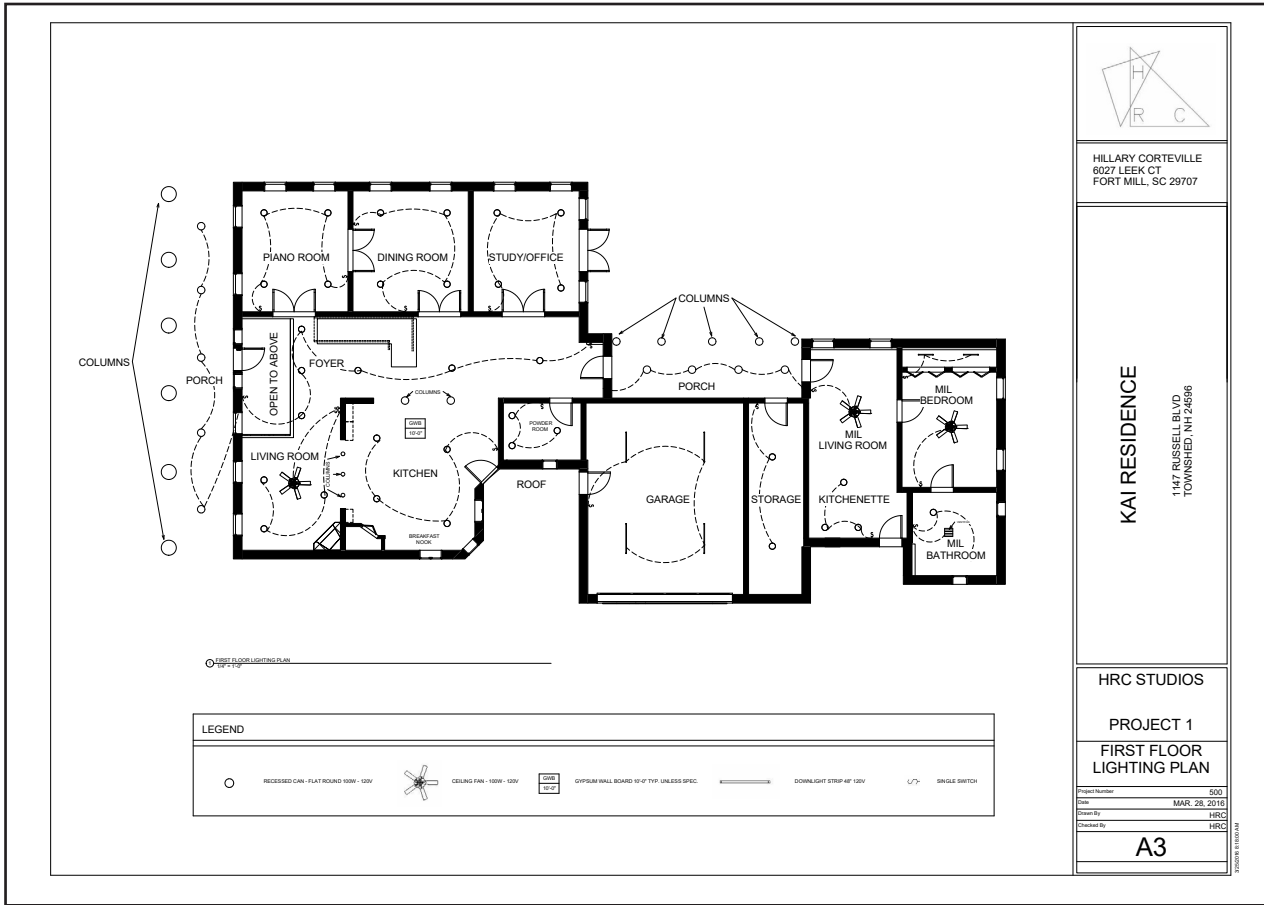
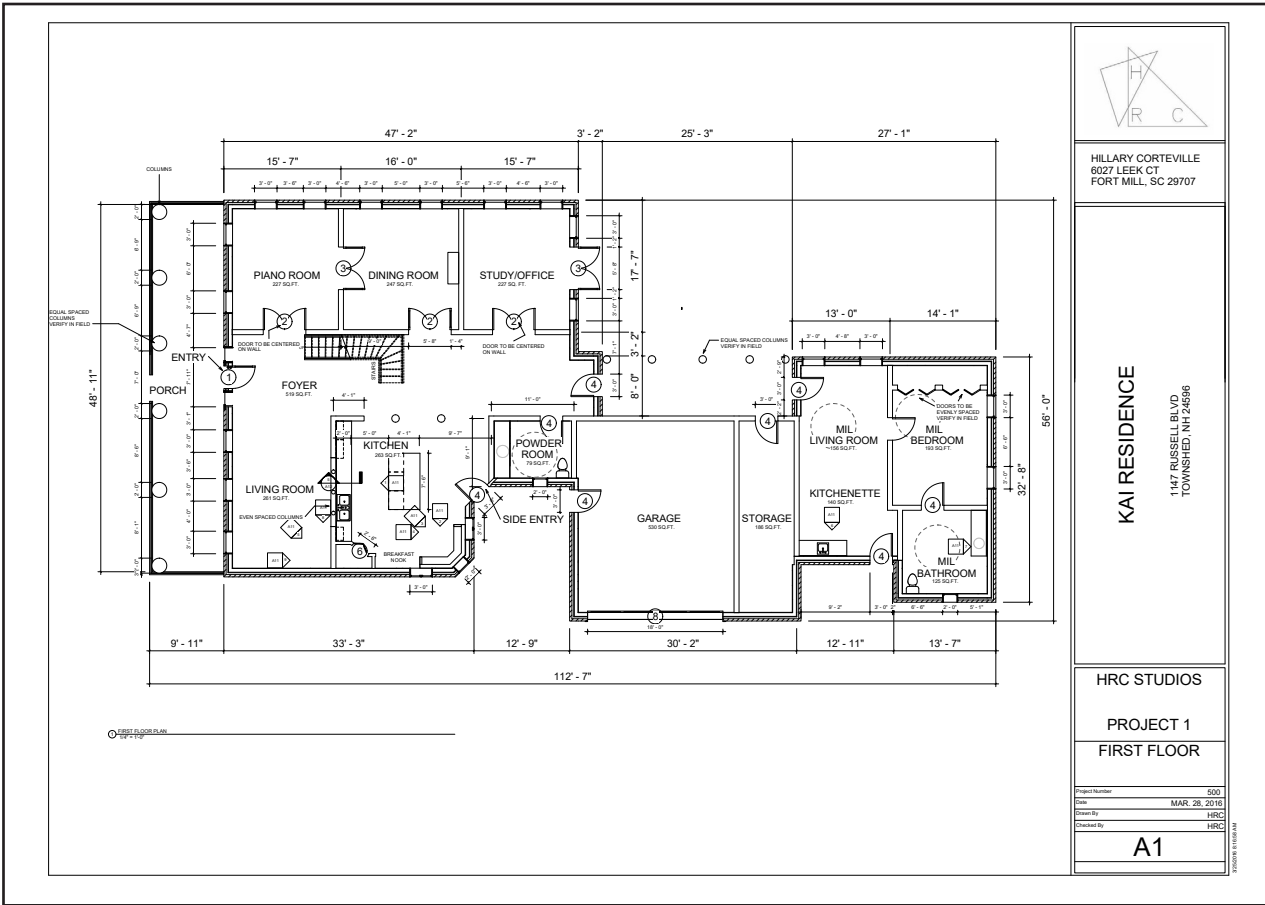


SECOND FLOOR PLAN



KITCHEN PERSPECTIVE

CONSTRUCTION DOCUMENTS: KAI RESIDENCE formally Wagner Residence from residential design project



HOSPITALITY: STATURE: MENS SPA



ENTRY PERSPECTIVE



STYLING CHAIR ELEVATION

Stature is a men's spa that is geared to accommodate a man that wants to feel and look good but all the while feeling comfortable enough to feel as if they can relax and fully let go.

The goal of this space is to emanate the feeling of **relaxation** with an **abstract essence**.

Shown Through:

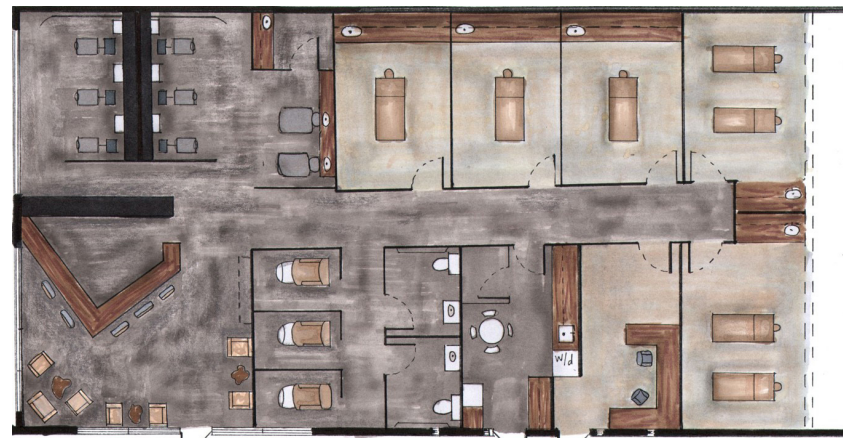
- Natural Concrete Gray
- Tan Color
- Dramatic Lighting
- Murals
- Punch of Colors
- Warm Against Cool



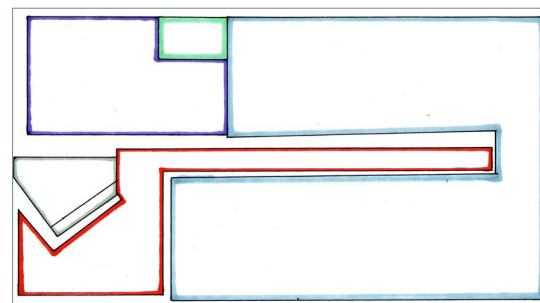
EXTERIOR ELEVATION



STYLING AND SHAMPOO ELEVATION



FLOORPLAN



RCP DIAGRAM



STATURE IS DEFINED AS IMPORTANCE OR REPUTATION GAINED BY ABILITY OR ACHIEVMENT

COMMERCIAL/RESIDENTIAL: INTERIOR INITIATIVES

The concept of Interior Initiatives will be a light, fresh, and whimsical atmosphere using delicate colors and patterns. This will help promote the idea of sustainability through fresh positive energy and thoughts. The gallery on the first floor creates interest using unique angular shapes on the displays, desks and the soffits.



ENTRY PERSPECTIVE



FIRST FLOOR

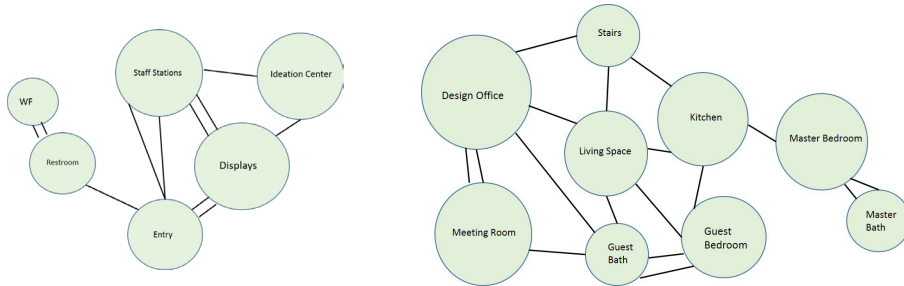


SECOND FLOOR

The FF&E throughout the upstairs and downstairs is sustainable in its material and contributes to the atmosphere. The upstairs residence uses a cool neutral gray color palette with pops of color and unique modern style furnishings. The entirety of the upstairs has been designed for ease of navigation while still having the privacy that the owner needs.



SECTION



SECTION



Bathroom Tile Chair Upholstery Laminate Flooring Sofa Upholstery Gallery Paint



SECOND FLOOR ELECTRICAL PLAN